



WebTrader User Guide

Table of Contents

A. Main Functions	3
a) How to Login	3
Servers.....	3
b) Opening a New Order	4
Instant Execution	5
Pending Orders	5
c) Adding a Chart.....	6
Using Charts	7
d) Customize Favorites.....	9
e) Customize Spot Panes.....	10
B. Main Areas of the WebTrader	11
a) The Main Areas	11
b) My Favorites.....	12
c) Instruments.....	13
d) Open Positions	14
Modify/Close an Order	14
New Order Tab.....	15
e) Trade History.....	16
f) Spot Panes.....	17
g) Charts	18
C. The 4 Main Tabs	18

A. Main Functions

a) How to Login

First you must go to the following URL - <https://IronFX.com/webtrader/>

You will come to a screen where you must insert your login number, password as well as selecting your server.



The screenshot shows a login interface for IronForex. At the top, there is a red header with a key icon and the text 'Platform login'. Below this is a white box containing the IronForex logo. Underneath the logo are three input fields: 'Login:', 'Password:', and 'Server:'. The 'Server:' field is a dropdown menu with 'IronForex Real' selected. At the bottom of the form is a red 'Login' button.

Click on the text fields to edit and input your login and password:

Login – your MT4 trading account login

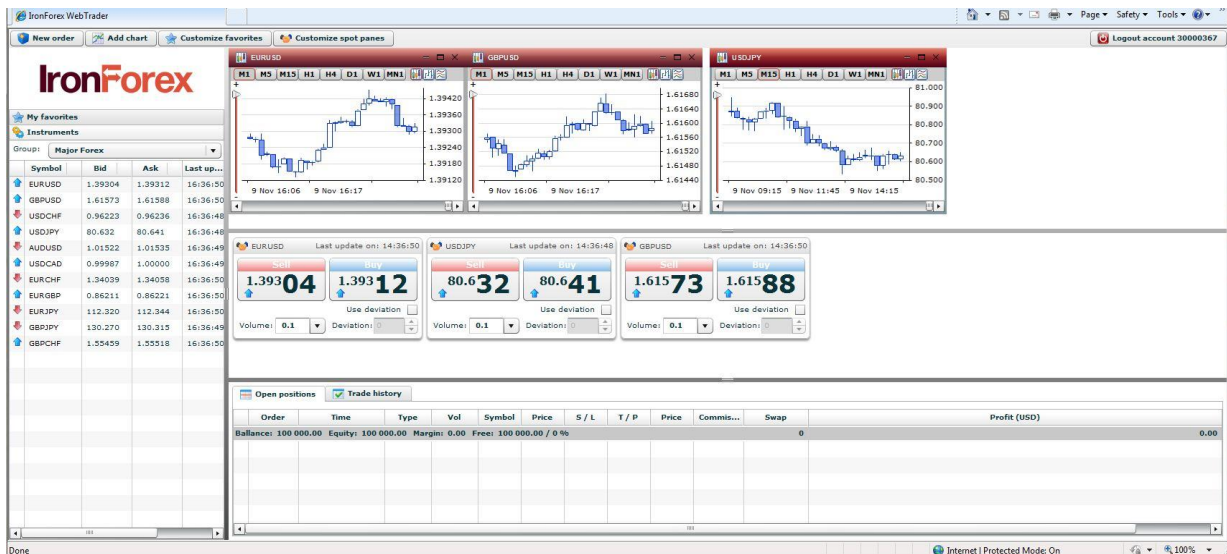
Password – your MT4 trading account password

Servers – By clicking on the '**Server**' button you have the option of selecting your desired server.

After entering your account login details, click on the '**Login**' button.



Once clicking on the login button it will attempt to connect to the server and log you into your trading account using the WebTrader. If you have successfully logged in you will see a screen like this:



b) Opening a New Order

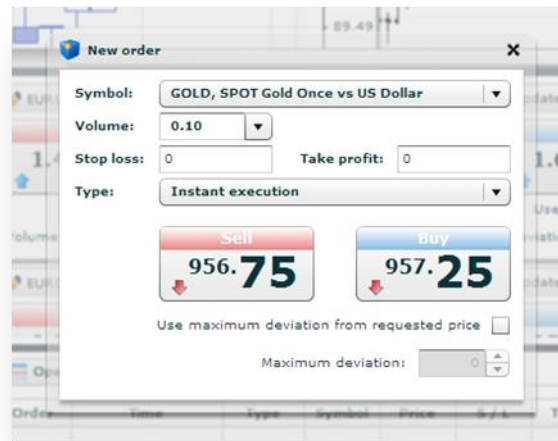
Opening a trade is pretty simple and can be done by various methods...

1. Using the *New Order* tab
2. *Double-clicking* any instrument in the **Instruments Section**
3. *Double-clicking* any instrument in the **Favourites Section**
4. *Using the Spot Panes*

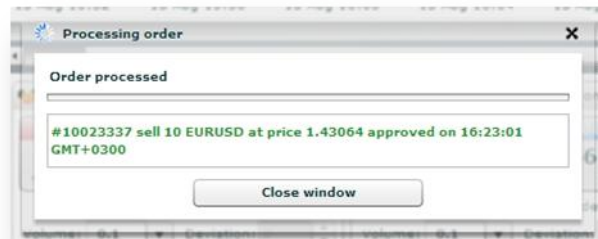
Clicking or double clicking depending on where you are opening a new order will bring you to a screen like below. When placing an order must select the *Symbol*, set the *Volume*, you can optionally set a *Stop Loss* or *Take Profit* for the order, and then you must decide whether you want to create an *Instant Execution* or a *Pending Order*.

Instant Execution

Being an **Instant Execution** you must then choose whether to 'Buy' or 'Sell' by clicking the corresponding button, you also you have the option of using and specifying a *Maximum Deviation* on instant executed orders.

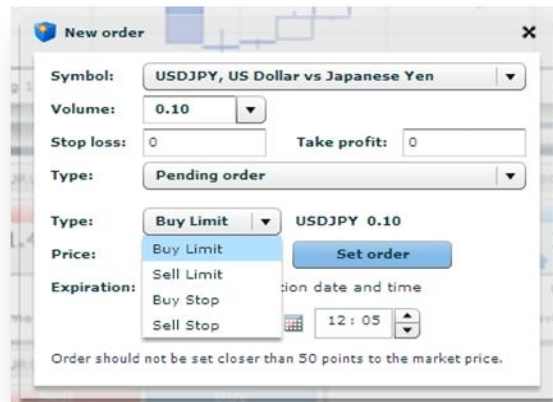


Once clicking on **Buy** or **Sell**, you will know if your order was successfully placed when a message appears stating the price, order number, symbol, and the time it was approved at. You can then click on **Close Window** and carry on trading.



Pending Orders

Being a **Pending Order** you do not have the ability to Buy or Sell or use the maximum deviation. Instead you must...

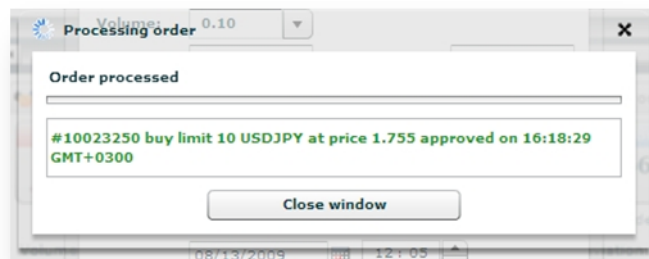


...select it to be:

- Buy Limit*
- Sell Limit*
- Buy Stop*
- Sell Stop*

Then you must specify the **'Price'** you wish the pending order to be executed at. You can also optionally set an **'Expiration'**, which is the date for the pending order to delete if it doesn't reach its Price. When finished select the **'Set Order'** button.

If the order is successfully placed, you will receive a message like so where it will state the price, order number, symbol, and the time it was approved at. You can then click on **Close Window** and carry on trading.



c) Adding a Chart



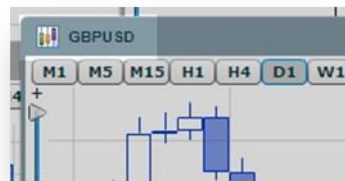
To add a chart you must select the **'Add Chart'** option which is located at the very top-left of the WebTrader Platform screen. Upon clicking a new window will appear where you will notice different **Groups** of all instruments.

Clicking on any **Group** will open the corresponding tradable instruments. Simply then select the instrument you wish to add as a chart and click **OK**. The current window will close and a new chart window will begin to load on your WebTrader Platform.



Using Charts

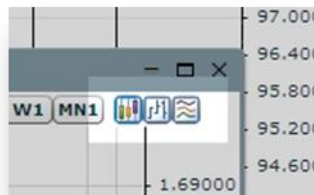
There are several features of the chart which you must be aware of. On each chart the instruments symbol is stated on the top of the window. In the example below it is **GBPUSD**.



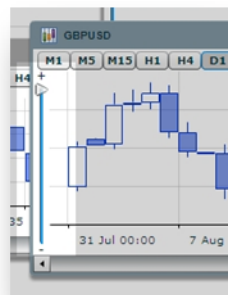
The tabs running on top of the chart area are the choices for time periods you can select; they range from **M1** = 1 minute, to **MN1** = 1 Month.



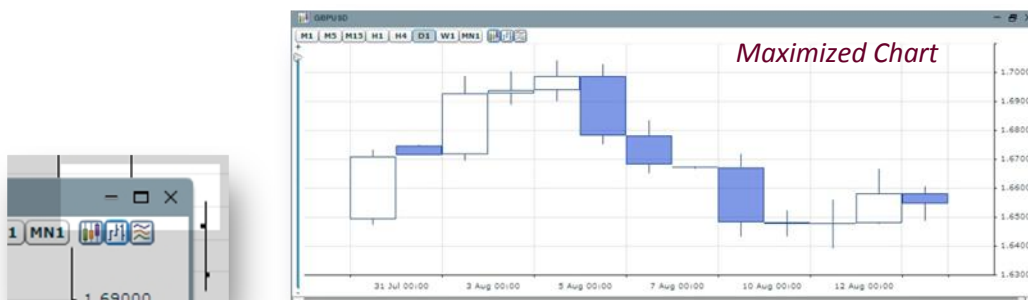
You can select from 3 different types of *candlestick*, *bars* or a *line chart*:



Located on the left of your chart window is the zoom facility. Moving the arrow towards the (-) sign will zoom out, while moving it closer to the (+) sign will zoom in...



Also notice in the top-right corner of every chart you have the following options: minimize, maximize, and close. Selecting the maximize button will open you up a much larger clearer view of any chart if need be.



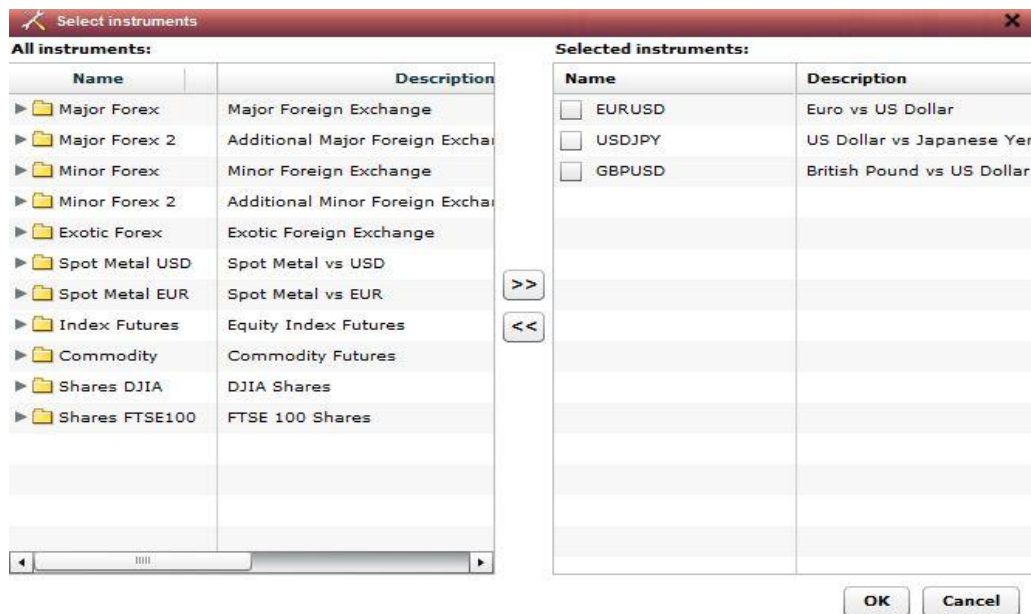
Using your mouse, if you hover over any area of a chart it will tell you certain information regarding that trade for that specific time period. Holding down your mouse and scrolling horizontally (left and right) will move the chart back and forwards in time.

d) Customize Favorites

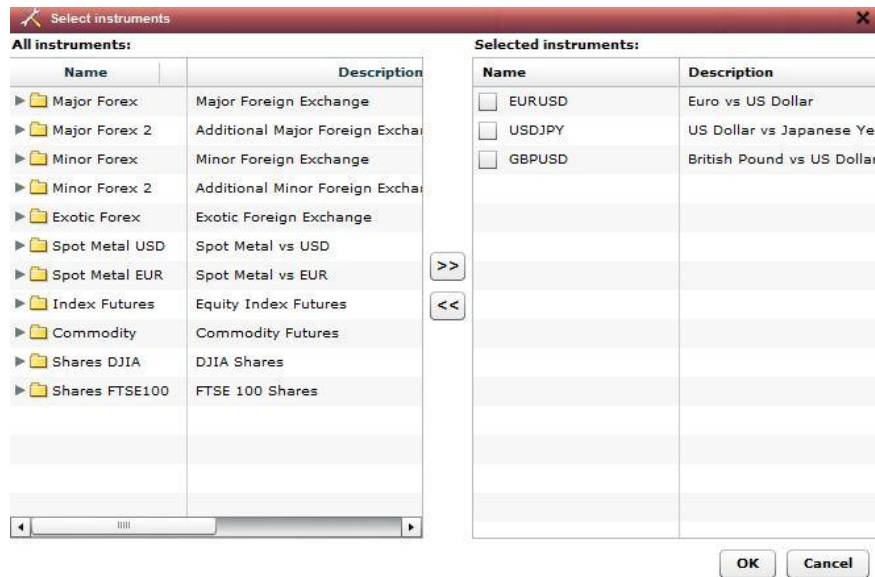
The customize Favorites tab is located at the top-left corner of your WebTrader Platform.



Single-clicking will open you up a window which contains 2 sections. The **ALL Instruments** section is where you must tick any trading instrument you wish to apply to your Favorites. Once you have selected click on the (>>) arrows and it will transfer them to your **Selected Instruments** area.



The same applies when deciding to remove any of your favorites. Simply tick the box that corresponds with the trading instrument you wish to remove from the **Selected Instruments** section in this case. After making your selection/s click on the (<<) arrows to remove them.



Once you have finished customizing your favorites select the 'OK' button and when you return to the main WebTrader Platform screen where you're **My Favorites** section should be updated.

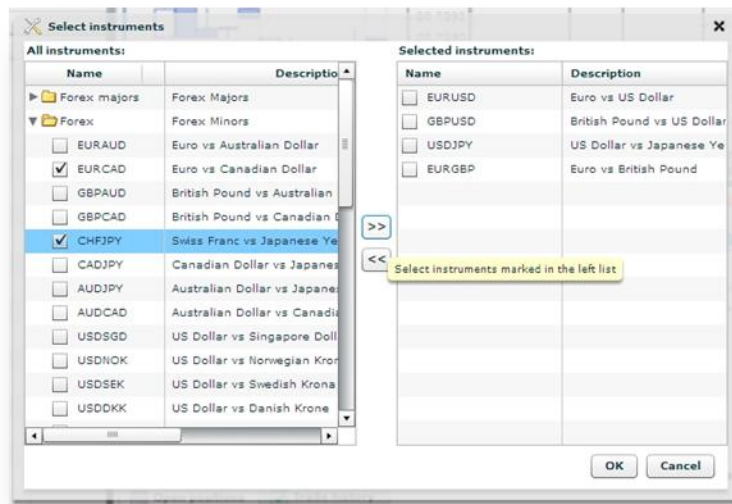
e) Customize Spot Panes

To customize your Spot Panes you must click the corresponding button which is the last button of the 4 located at the top-left of your screen.



A new window will open once you have pressed the **Customize Spot Panes** button. You will see 2 sections very similar to that when customizing favorites which contain the **Groups** of all instruments.

The **ALL Instruments** section is where you must tick any trading instrument you wish to apply to your Spot Pane area. Once you have selected click on the (>>) arrows and it will transfer them to your **Selected Instruments** area.



Your **Selected Instruments** area will include all your trades which will be visible in your Spot Panes area. If you want to remove any of your Spot Panes simply tick the box that corresponds with the trading instrument you wish to remove from the **Selected Instruments** section. After making your selection/s click on the (<<) arrows to remove them.

Once you have finished customizing your Spot Panes select the 'OK' button and when you return to the main WebTrader Platform screen where you're **Spot Panes** section should be updated.

B. Main Areas of the WebTrader

a) The Main Areas

These are the main areas of the WebTrader Platform:

My Favorites – The My Favorites window is where your customized and preferred instruments are displayed – *read more*

Instruments – This area lists all the available trading instruments with all their rates – *read more*

Open Positions – This window displays all your current open positions and pending orders – *read more*

Trade History - Gives you every closed trade you have placed and the ability to browse different date ranges – *read more*

Spot Panes – This is where your selected instruments will be available for quick trading – *read more*

Charts – where your selected charts will be displayed and functional from – [read more](#)

The 4 Main Tabs – the 4 available options located at the top - [read more](#)

b) My Favorites

The **My Favorites** area displays your preferred trading instruments. To open the My Favorites window you must first click on the corresponding text with the star symbol alongside it.

The screenshot shows the 'My favorites' window with the 'Instruments' tab selected. The 'Group' is set to 'Major Forex'. The table below lists various currency pairs with their bid, ask, last update, high, and low prices.

Symbol	Bid	Ask	Last up...	High	Low
EURUSD	1.39272	1.39279	16:38:16	1.39735	1.38234
GBPUSD	1.61554	1.61569	16:38:16	1.61835	1.60660
USDCHF	0.96191	0.96204	16:38:14	0.96837	0.95891
USDJPY	80.622	80.631	16:38:11	81.232	80.532
AUDUSD	1.01524	1.01534	16:38:16	1.01733	1.00730
USDCAD	0.99999	1.00013	16:38:14	1.00725	0.99796
EURCHF	1.33978	1.34007	16:38:16	1.34498	1.33237
EURGBP	0.86202	0.86214	16:38:16	0.86372	0.85896
EURJPY	112.285	112.309	16:38:16	113.082	111.712
GBPJPY	130.236	130.288	16:38:16	131.073	129.940
GBPCHF	1.55399	1.55449	16:38:16	1.56078	1.54693

Double-clicking on any instrument will open up a new order like this:

The 'New order' window is shown for the EURUSD instrument. The fields are as follows:

- Symbol:** EURUSD, Euro vs US Dollar
- Volume:** 0.10
- Stop loss:** 0
- Take profit:** 0
- Type:** Instant execution

Below the fields are two buttons: 'Sell' at price 1.39225 and 'Buy' at price 1.39236. There is a checkbox for 'Use maximum deviation from requested price' which is currently unchecked, and a 'Maximum deviation' field set to 0.

Further information for opening a new order

c) Instruments

The Instruments section displays, all tradable instruments. From within the **Instruments** section you have the ability to select any tradable instrument, if you select the **Group** button you have the ability to switch between instrument **Groups**:

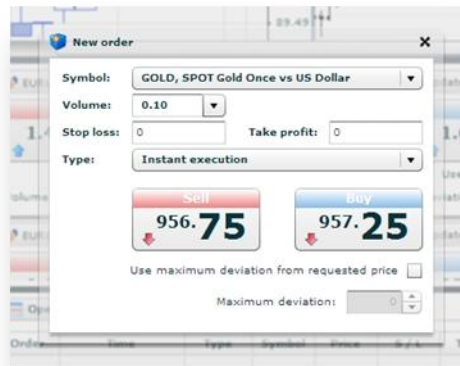
Group:	Major Forex				
Sym	Major Forex				
EURUSD					
GBPUSD					
USDCHF					
USDJPY	80.611	80.621	16:42:22	81.232	80.532
AUDUSD	1.01506	1.01516	16:42:21	1.01733	1.00730
USDCAD	1.00030	1.00045	16:42:18	1.00725	0.99796

The Instruments section displays the following criteria on each tradable instrument:

- Symbols
- Bid and ask rates
- High and Low for the current day
- Last Update Time

Instruments						
Group: Major Forex						
	Symbol	Bid	Ask	Last up...	High	Low
↑	EURUSD	1.39219	1.39226	16:43:33	1.39735	1.38234
↑	GBPUSD	1.61563	1.61574	16:43:33	1.61835	1.60660
↓	USDCHF	0.96176	0.96189	16:43:33	0.96837	0.95891
↑	USDJPY	80.618	80.625	16:43:32	81.232	80.532
↑	AUDUSD	1.01490	1.01502	16:43:33	1.01733	1.00730
↑	USDCAD	1.00008	1.00025	16:43:32	1.00725	0.99796
↑	EURCHF	1.33891	1.33914	16:43:33	1.34498	1.33237
↑	EURGBP	0.86163	0.86172	16:43:33	0.86372	0.85896
↑	EURJPY	112.227	112.252	16:43:33	113.082	111.712
↑	GBPJPY	130.226	130.277	16:43:33	131.073	129.940
↑	GBPCHF	1.55370	1.55424	16:43:32	1.56078	1.54693

Double-clicking on any trade will open up a new order like this:



Further information for opening a new order

d) Open Positions

The **Open Positions** shows the full order details of your open positions and pending orders, as well as allowing you to modify orders. It also indicates your **balance**, **equity**, **margin**, **free margin**, and **margin level**.

Order	Time	Type	Vol	Symbol	Price	S / L	T / P	Price	Commis...	Swap	Profit (USD)
9970022	10.08.2009 16:47	sell	0.10	USDJPY	97.301	0.000	0.000	95.709	0.00	- 0.83	166
9969985	10.08.2009 16:45	buy	0.10	USDJPY	97.309	0.000	0.000	95.701	0.00	- 0.36	- 168
9969983	10.08.2009 16:45	buy	0.10	USDJPY	97.311	0.000	0.000	95.701	0.00	- 0.36	- 168
9969976	10.08.2009 16:45	sell	0.10	EURUSD	1.41634	0.00000	0.00000	1.42852	0.00	- 2.20	- 121
9948295	07.08.2009 11:16	buy	5.3	USDCHF	1.06500	0.00000	0.00000	1.07208	0.00	- 27.46	2 632
9935575	06.08.2009 14:08	sell	0.10	EURUSD	1.43871	0.00000	0.00000	1.42852	0.00	- 3.08	101
9935024	06.08.2009 13:57	sell	0.10	EURUSD	1.43819	0.00000	0.00000	1.42852	0.00	- 3.08	96
9935009	06.08.2009 13:57	sell	0.10	EURUSD	1.43820	0.00000	0.00000	1.42852	0.00	- 3.08	96
9935006	06.08.2009 13:57	sell	0.10	EURUSD	1.43805	0.00000	0.00000	1.42852	0.00	- 3.08	95
9924645	05.08.2009 19:04	buy	0.10	GOLD	961.68	851.68	0.00	955.88	0.00	+ 1.70	- 58
9904029	04.08.2009 14:07	sell	1.0	GBPUSD	1.69246	0.00000	0.00000	1.65969	0.00	- 30.80	3 277
9901965	04.08.2009 11:37	sell	0.10	GBPUSD	1.69271	0.00000	0.00000	1.65969	0.00	- 3.08	330
Balance: 76 756.15 Equity: 83 176.00 Margin: 23 522.16 Free: 59 653.83 / 353.6 %											
10023250	13.08.2009 16:18	buy limit	0.10	USDJPY	1.755	0.000	0.000	95.735			
10023244	13.08.2009 16:18	buy limit	0.10	USDJPY	1.755	0.000	0.000	95.733			

Modify/Close an Order

From within the **Open Positions** section you can modify/close any orders. In the case of updating an open order simply double-click on your chosen order and a window as shown below will appear.



The aspects you can choose to update are the *Stop loss* and *Take Profit*, their *Levels*, and it also allows you to copy the precise rate of that trade and current moment in time directly from the platform. Once making your desired changes you must then click '**Update**'. When successfully updated you should receive a confirmation screen.

To close an order all you must to do is click the **Close at "current rate"** button at the bottom-left corner of the window. If it is successfully closed, you will see a confirmation screen like this. You can then close this window and carry on trading.



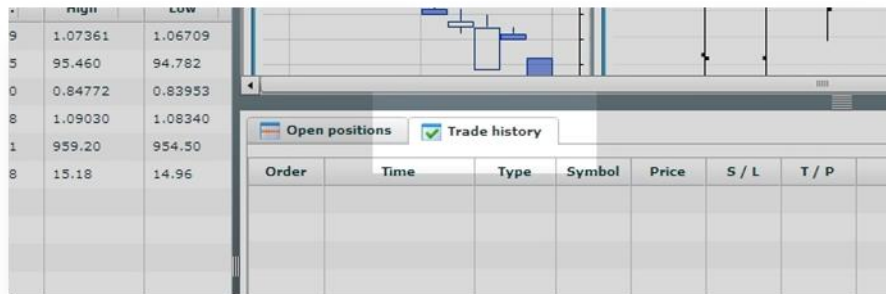
New Order Tab

The **New Order** tab is located at the very top-left of the WebTrader platform screen. When clicked, this button gives you the ability to open a new order window. See [Opening a new order for](#) how to place a trade on the WebTrader platform.

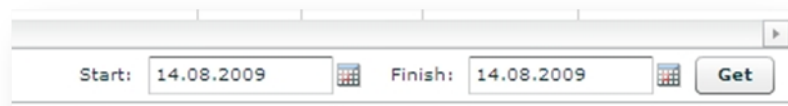


e) Trade History

Your trade history gives you a comprehensive run down of all your closed orders, removed pending orders and deposits/withdrawals. You can access it by pressing **'Trade History'** which is located next to **Open Positions**.



Inside your trade history you can run a report on any period of time. All you must to do is enter the **Start** date and **End** date and then press **'Get'**.



Your results of your designated date range will appear. You can sort the results by any column with a single-click on the header of the column.

Open positions								Trade history				
Order	Time	Type	Symbol	Price	S / L	T / P	Time	Price	Commis...	Swap	Profit	
9858360	06.08.2009 07:37	buy stop	NZDUSD	1.00000	0.00000	0.00000	06.08.2009 07:37	0.67059	0.00	0.00	0.00	
9858377	06.08.2009 07:37	buy stop	NZDUSD	1.00000	0.00000	0.00000	06.08.2009 07:37	0.67059	0.00	0.00	0.00	
9858400	07.08.2009 10:22	sell stop	NZDUSD	0.10000	0.00000	0.00000	07.08.2009 10:22	0.67203	0.00	0.00	0.00	
9859007	07.08.2009 10:22	buy stop	EURUSD	2.00000	0.00000	0.00000	07.08.2009 10:22	1.43701	0.00	0.00	0.00	
9859017	07.08.2009 10:23	buy stop	EURUSD	2.00000	0.00000	0.00000	07.08.2009 10:23	1.43696	0.00	0.00	0.00	
9859125	07.08.2009 10:24	buy stop	EURUSD	2.00000	0.00000	0.00000	07.08.2009 10:24	1.43723	0.00	0.00	0.00	
9859331	07.08.2009 10:23	buy stop	EURUSD	12.00000	0.00000	0.00000	07.08.2009 10:23	1.43693	0.00	0.00	0.00	
9859470	07.08.2009 10:23	sell stop	EURUSD	1.10000	0.00000	0.00000	07.08.2009 10:23	1.43694	0.00	0.00	0.00	
9859482	07.08.2009 10:23	sell stop	EURUSD	1.10000	0.00000	0.00000	07.08.2009 10:23	1.43694	0.00	0.00	0.00	
9867086	04.08.2009 11:39	sell	GBPUSD	1.65584	0.00000	0.00000	04.08.2009 11:39	1.69300	- 0.56	- 0.56	- 371.60	

Underneath all your orders at the very bottom of the report you will notice the **Profit, Deposit** and **Withdrawal** for your specified period.

f) Spot Panes

This is where your selected instruments will be available for quick trading. To learn how to customize your Spot Panes [click here](#). Your Spot Panes are located underneath your chart area:

Order	Time	Type	Vol	Symbol	Price	S / L	T / P	Price	Commis...	Swap	Profit (USD)
10005135	12.08.2009 18:07	buy	0.10	GBPUSD	1.65102	0.00000	0.00000	1.62873	0.00	- 0.23	- 222.90

The Spot Panes provide you with a direct link to your selected trades which you wish to have quick access to. On a Spot Pane you are given the **Buy** or **Sell** option with the current rates, you can choose your **volume**, and you can choose whether to use a maximum **deviation**.

Upon clicking the **Buy** or **Sell** buttons to place your order you will receive a notification saying your order was approved, this indicates your order was successfully placed.

g) Charts

This is where your selected charts will be displayed and functional from, your charts area is easily visible and is located in the top-right section of your screen.

C. The 4 Main Tabs

The 4 Main tabs are situated at the very top-left of the WebTrader screen.



New Order – when this button is clicked it will open up a new order window – *opening a new order*

Add Chart – clicking here brings up a window of all the tradable instruments of which you can select to add as a chart to the charts area – *adding a chart*

Customize Favorites – this is the button you press to access the configuration of your favorites area – *read more*

Customize Spot Panes - is the button you press to access the configuration of the Spot Panes – *read more*

IronFX

30, Gr. Xenopoulou Street
3106 Limassol, Cyprus

Tel: +357 25027000
Fax: +357 25027001

info@ironfx.com
www.IronFX.com